

Load cell pin



Features

Capacity 1t-5t

Shaft pin

Cost-effective

Nickel plated alloy steel

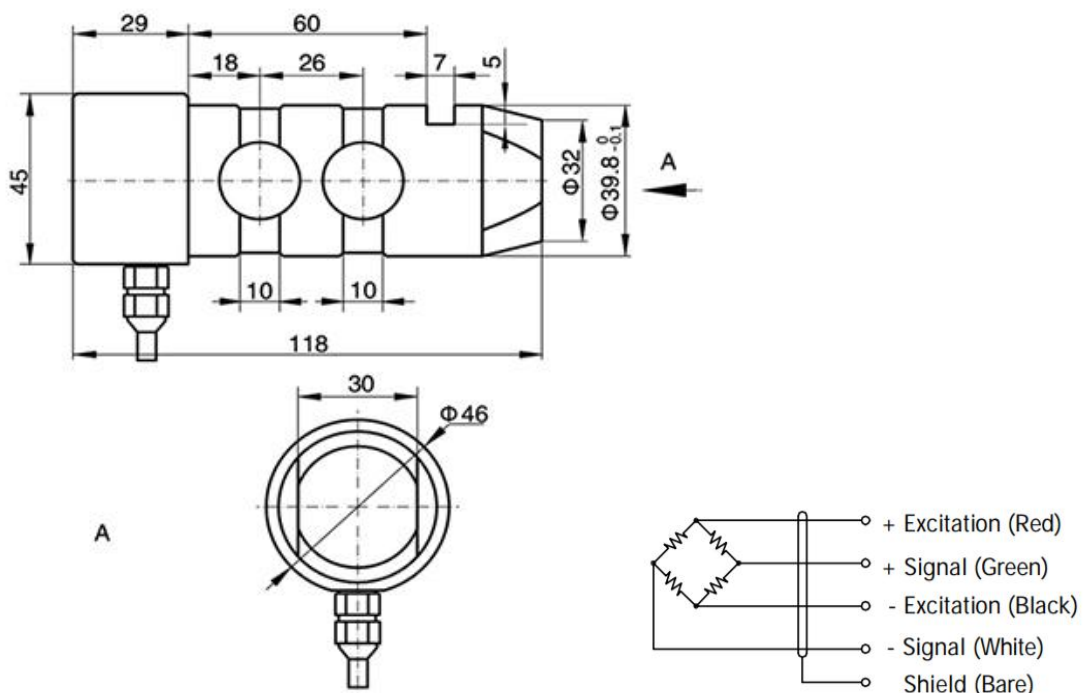
Optional features

Optional output(4-20mA, 0-5V)

DESCRIPTION

The ZMHBZ load cell pin extend across a wide array of industries. They include crane and hoist load/condition monitoring (where they often get referred to as a crane load cell) as well as numerous applications in the fields of safety, industrial measurement, and mobile machinery.

DIMENSIONS (mm)



SPECIFICATIONS

PARAMETER	VALUE	UNIT
Standard capacities (E _{max})	1-5	T
Rated output-R.O.	2.0	mV/V
Zero balance	1	±% of rated output
Non linearity	0.2	±% of rated output
Hysteresis	0.1	±% of rated output
Non-repeatability	0.05	±% of rated output
Creep error (30 minutes)	0.03	±% of rated output
Zero return (30 minutes)	0.03	±% of rated output
Temperature effect on min. dead load output	0.0026	±% of rated output/°C
Temperature effect on sensitivity	0.0015	±% of rated output/°C
Compensated temperature range	-10 to +40	°C
Operating temperature range	-20 to +60	°C
Safe overload	150	% of R.C
Ultimate overload	200	% of R.C
Excitation, recommended	10	Vdc
Excitation, maximum	15	Vdc
Input resistance	370±20	Ohms
Output resistance	350±3	Ohms
Insulation resistance	5000	Mega-Ohms
Material	Alloy steel	
Protection class	IP66	

All specifications listed subject to change without notice.