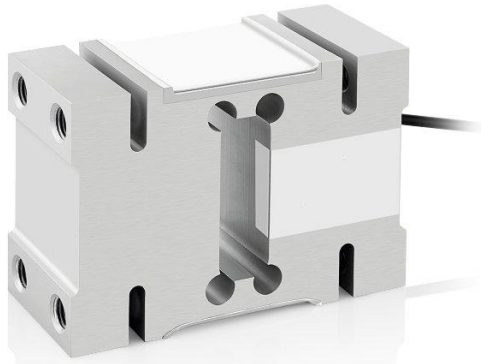


Single point load cell



Features

Capacity 50kg-2000kg

High accuracy

High stability

Nickel plated alloy steel

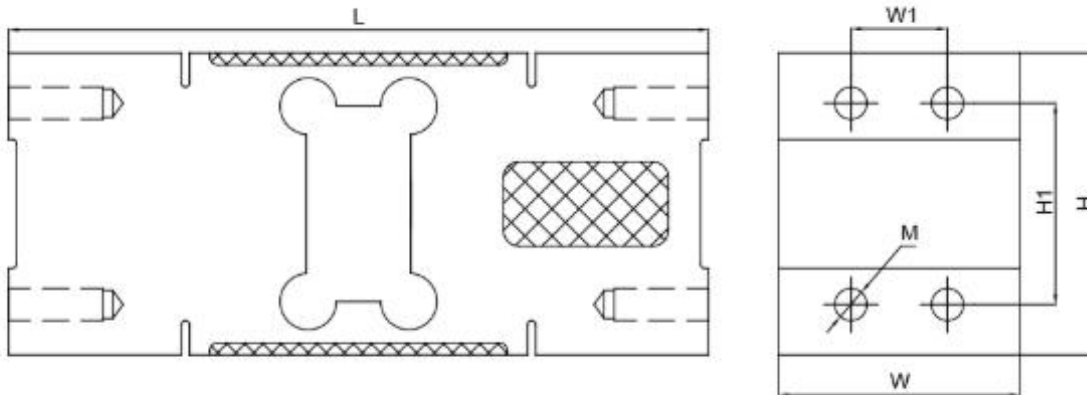
Optional features

Stainless steel construction

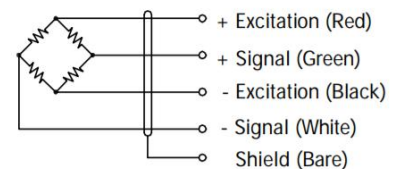
DESCRIPTION

The ZMPF is alloy steel construction and adhesive sealed single point type load cell with IP66 protection. It is suitable for floor scales, counting scales, packing machines and similar electronic weighing devices or testing machines.

DIMENSIONS (mm)



Capacity	H	H1	L	W	W1	M
50 - 200 kg	75	50	156	44	24	M12
250 - 500 kg	95	70	146	60	36	M12
750 - 2000 kg	125	95	176	76	46	M16



SPECIFICATIONS

PARAMETER	VALUE	UNIT
Standard capacities (E _{max})	50-2000	KG
Rated output-R.O.	2.0	mV/V
Zero balance	1	±% of rated output
Non linearity	0.03	±% of rated output
Hysteresis	0.03	±% of rated output
Non-repeatability	0.02	±% of rated output
Creep error (30 minutes)	0.03	±% of rated output
Zero return (30 minutes)	0.03	±% of rated output
Temperature effect on min. dead load output	0.0026	±% of rated output/°C
Temperature effect on sensitivity	0.0015	±% of rated output/°C
Compensated temperature range	-10 to +40	°C
Operating temperature range	-20 to +60	°C
Safe overload	150	% of R.C
Ultimate overload	200	% of R.C
Excitation, recommended	10	Vdc
Excitation, maximum	15	Vdc
Input resistance	360±10	Ohms
Output resistance	350±3	Ohms
Insulation resistance	5000	Mega-Ohms
Material	Alloy steel	
Protection class	IP66	

All specifications listed subject to change without notice.