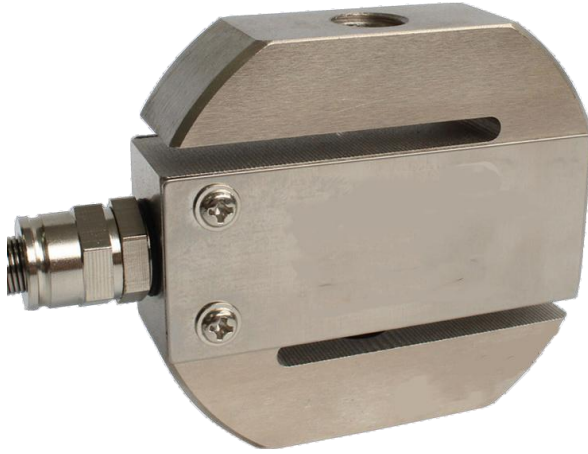


Circular S type load cell



Features

- Capacity 1kg-5T
- High accuracy
- S beam structure
- Nickel plated alloy steel

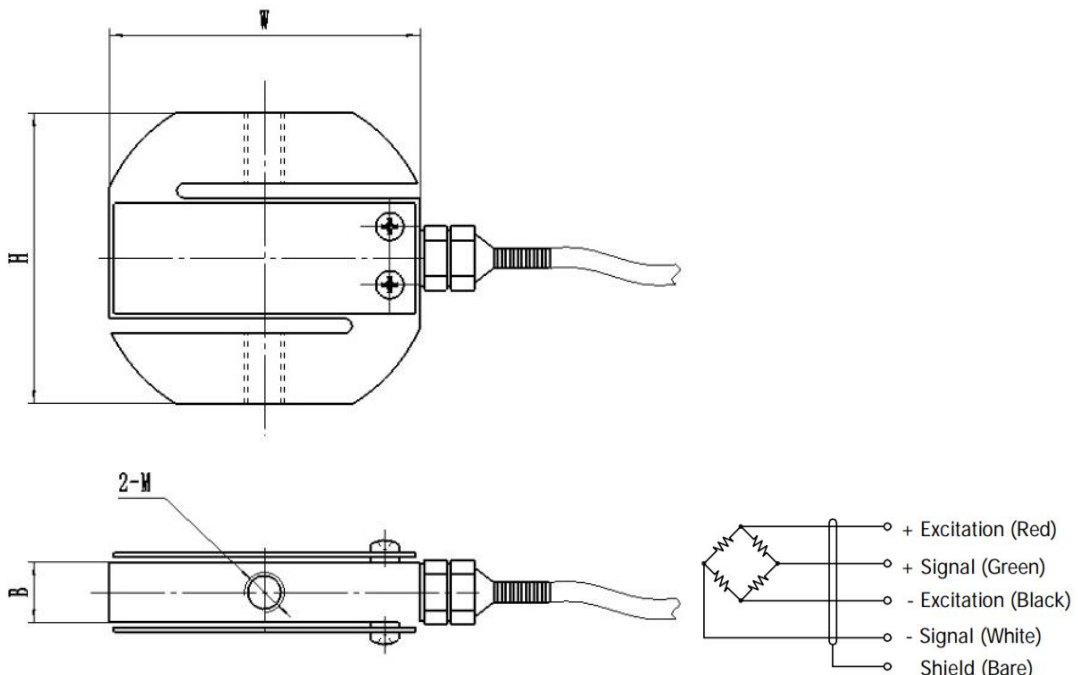
Optional features

- Optional output(4-20mA,0-5V)

DESCRIPTION

The ZMYS circular S type tension load cell offers a wide range of capacities, extending from 1kg to 5000kg. Constructed from alloy steel with an electroless nickel-plated surface, it's a robust and reliable choice. We provide optional amplifier which converts analog signal into 4-20mA, 0-5V or 0-10V.

DIMENSIONS (mm)



| | M | W | H | B |
|-----------|----------|----|----|----|
| 1-30kg | M8×1.25 | 60 | 58 | 12 |
| 50-200kg | M12×1.75 | 70 | 64 | 20 |
| 300-500kg | M12×1.75 | 70 | 64 | 20 |
| 1T | M16×2 | 70 | 64 | 25 |
| 2-5T | M20×2.5 | 84 | 92 | 32 |

SPECIFICATIONS

| PARAMETER | VALUE | UNIT |
|---|-------------|-----------------------|
| Standard capacities (E _{max}) | 1-5000 | KG |
| Rated output-R.O. | 2.0 | mV/V |
| Zero balance | 1 | ±% of rated output |
| Non linearity | 0.03 | ±% of rated output |
| Hysteresis | 0.03 | ±% of rated output |
| Non-repeatability | 0.02 | ±% of rated output |
| Creep error (30 minutes) | 0.03 | ±% of rated output |
| Zero return (30 minutes) | 0.03 | ±% of rated output |
| Temperature effect on min. dead load output | 0.0026 | ±% of rated output/°C |
| Temperature effect on sensitivity | 0.0015 | ±% of rated output/°C |
| Compensated temperature range | -10 to +40 | °C |
| Operating temperature range | -20 to +60 | °C |
| Safe overload | 150 | % of R.C |
| Ultimate overload | 200 | % of R.C |
| Excitation, recommended | 10 | Vdc |
| Excitation, maximum | 15 | Vdc |
| Input resistance | 380±10 | Ohms |
| Output resistance | 350±3 | Ohms |
| Insulation resistance | 5000 | Mega-Ohms |
| Material | Alloy steel | |
| Protection class | IP67 | |

All specifications listed subject to change without notice.